

1909

GREAT BRITISH DESIGN

SINCE

1909





## TIMELESS CLASSIC & MODERN DESIGNS

The 1909 collection offers a versatile range of classic painted, in-frame timber kitchens and feature units, meticulously crafted to meet the aesthetic and functional demands of the 21st century. While embracing timeless, traditional interior characteristics, 1909 also includes modern designs, ensuring we complement both classic and contemporary homes. 1909 adapts to any style, delivering a perfect blend of heritage and modernity.

[www.1909kitchens.co.uk](http://www.1909kitchens.co.uk)

# Our Collection

---

*Whilst each 1909 door style is different, there are intrinsic parallels which run throughout: quality, meticulous attention to detail and a timeless, quintessentially British feel, all ensuring an abundance of possibilities can be created to suit you and your home.*



## Ovolo

Ovolo; where intricate frame detailing meets a classic Shaker, offering an elegant twist on a timeless style.





## Shaker

An enduring familiar look with perennial beauty, that works well within a traditional or modern home.



## Half Pencil & Scalloped Shaker

The most intricately detailed of our door styles, Half Pencil & Scalloped Shaker brings elegant beading to the timeless shaker design.



## Georgian Shaker

Carefully combining classical styling with embellished detailing, our Georgian Shaker is truly graceful.





## Quarter Round Shaker

Our Quarter Round beading brings a subtle and endearing softness to the classic Shaker profile.



## Slab

Slab combines a contemporary, clean, linear design with a traditional in-frame look, for a sleek and sophisticated aesthetic.



## Slab Portal

Enhances the visual flow of your kitchen, catching eyes with its unique yet minimalistic design.





## Slab Extended Channel

Offers a bold, ultra-modern design, combining sleek aesthetics with practical functionality for a truly distinctive handle option.







## Ovolo

The overall aesthetic of this kitchen complements the intricate frame detailing of our Ovolo door, combining elegant wall panelling, moulded plinth and a herringbone timber floor to exude refinement. Inspired by a 19th Century colour palette, this scheme brings together a collection of soft and deep greys for a welcoming atmosphere.

As the social hub of the house, the kitchen's practical working areas coincide perfectly with a bright and airy dining space. Central to the design is a large statement island, providing an abundance of storage space, tiered worksurface zones for efficient food preparation, and a breakfast bar, offering the perfect place to enjoy a morning coffee.





*Range and colour*  
Ovolo painted in Silver Grey, Dove Grey  
& Slate.

*Worksurface*  
Strata Quartz Absolute Marbled White and  
Strata Granite Azul Aran worksurfaces  
with Prime Oak timber bench.



An End Grain timber worksurface functions as an integrated chopping board in the central island, combining beauty and functionality. Sitting alongside this, the sumptuous Strata Azul Aran Granite worksurface features waterfall edging to complement the elegance of our Ovolo door.







Kesseböhmer Convoy Larder





*Range and colour*

Ovolo painted in Cashmere, Porcelain  
& Truffle.

*Worksurface*

Strata Quartz Marbled White, Strata  
Quartz Perlatino worksurface & Prime  
Oak timber bench.







A truly tailored kitchen maximises every inch to provide optimum functionality. Integrating a chopping board and tray set into kitchen cabinetry is a great way to reduce workspace clutter whilst keeping practical pieces close to hand.





*Range and colour*

Ovolo painted in Cashmere,  
Porcelain & Truffle.

*Worksurface*

Strata Quartz Marbled White,  
Strata Quartz Perlato  
worksurface & Prime Oak  
timber bench.











## Ovolo True Curve

With its rounded, sleek design, True Curve serves the growing trend for those seeking to add warmer and more inviting elements into their interiors. Meticulously crafted and perfectly shaped, the fluid curves of the cabinet doors blend seamlessly, creating a striking, rounded island-end feature.

This elegant design enhances the room's aesthetic while offering a refined, functional area for entertaining family and friends, perfectly blending style with purpose. With its understated elegance and thoughtful details, True Curve transforms the kitchen into a welcoming haven where form and function are beautifully balanced to create a timeless, inviting ambience.







*Range and colour*  
Ovolo painted in Regiment  
& Copse Green.

*Worksurface*  
Strata Arabieto Bianco & Arabieto  
Noir worksurface.





True Curve features a single curved cabinet door for seamless fluidity. Pair two together for a statement barrel feature to command the attention of any room. And, with an integrated chopping board design in Natural Oak or Walnut, the True Curve door style can help create functional zoning in your kitchen layout.











# Shaker

---

*An enduring familiar look  
with perennial beauty, that  
works well within a traditional  
or modern home.*





## Shaker

Our in-frame Shaker door is a timeless classic, with versatile simplicity that makes it a charming staple for any traditional or contemporary home. Shown here in Storm Blue and with a welcoming country-style aesthetic, the design uses square feature posts throughout to create a free-standing look. This kitchen also maximises space perfectly, combining practical storage, attractive feature cabinetry and an exposed peninsular with breakfast bar seating. The original mantel creates a natural framework to host the hob, as well as utilising the surround for additional hanging storage space.





*Range and colour*  
Shaker painted in Storm Blue.

*Worksurface*  
Strata Quartz Carrara Gioia &  
Prime Oak Timber worksurfaces.









Open and hidden storage work in unison to optimise functionality in this design, with a Kesseböhmer LeMans corner solution, illuminated open cabinetry shelving, and the true star of the show, a stand-alone glazed dresser unit that creates an undeniable storage statement.









*Range and colour*  
Shaker painted in Putty.

*Worksurface*  
Strata Quartz Carrara  
Gioia worksurface.



This kitchen takes on a completely different feel in a muted grey palette, combining our elegant Putty shade with complementing handles and butt hinges.

All cabinet contents become easily visible and accessible with the Kesseböhmer Dispensa base pull-out.









*Range and colour*  
Shaker painted in Putty.

*Worksurface*  
Strata Quartz Carrara Gioia  
worksurface.







# Half Pencil & Scalloped Shaker

---

*The most intricately detailed  
of our door styles, Half Pencil &  
Scalloped brings elegant beading  
to the timeless Shaker design.*







## Half Pencil & Scalloped Shaker

The detailed Half Pencil & Scalloped design blends beautifully into this characterful period kitchen and adjoining boot room. A distinguished palette of bold Charcoal, soft Partridge Grey and Chalk creates a depth in the large footprint and perfectly complements the natural wood tones used in the flooring and worktops of the focal island. A moulded plinth and a traditional cornice add to the classic detailing of this quintessentially British design.





*Range and colour*

Half Pencil & Scalloped painted in  
Charcoal, Partridge Grey & Chalk.

*Worksurface*

Oak End Grain timber worksurfaces.





This practical space promotes ease and efficiency when preparing food, with an integrated island chopping board conveniently opposite the hob and oven. A dramatic feature mantel frames the cooking appliances, creating a clearly designated culinary zone and an instant focal point in the room. With breakfast bar seating and a herb and champagne trough, the central island is the ideal social hub for entertaining, making this kitchen a truly multi-functional space.

With a nod to period style, an adjoining boot room continues the intricate detailing of our Half Pencil & Scalloped door through to another practical living space, offering a dedicated storage area for coats and shoes and including dovetail drawers for clever under-seating storage.









# Georgian Shaker

---

*Carefully combining classical  
styling with embellished  
detailing, our Georgian Shaker  
is truly graceful.*









## Georgian Shaker

The delicate embellishment of our Georgian Shaker lends itself perfectly to this traditional kitchen in a beautifully restored home. The kitchen has been sympathetically designed to blend seamlessly with the original features of the room, such as the sash windows and beams, including the use of square feature posts throughout to create a classical free-standing look. Perfectly aligned with everyday life, the space merges a working kitchen with a dedicated dining area, ensuring this functional room truly is the heart of the home.





*Range and colour*  
Georgian Shaker, painted  
in Dove Grey & Dust Grey.

*Worksurface*  
Caesarstone Rugged  
Concrete worksurface.









Demonstrating the importance of cleverly considered design, whilst highlighting the natural features and proportions of the room, this beautifully ornate kitchen features a mix of cup, knob and latch handles on striking painted cabinetry.







*Range and colour*  
Georgian Shaker, painted  
in Dove Grey & Dust Grey.

*Worksurface*  
Caesarstone Rugged  
Concrete worksurface.





The footprint has been perfectly optimised through clever storage solutions, such as the Kesseböhmer LeMans corner unit, and prominent floor-to-ceiling cabinets. A stunning walk-in pantry offers even more storage for kitchen essentials, in an aesthetic that truly suits the traditional character of the property.





Kesseböhmer LeMans  
shown in Chrome Arena









*Range and colour*  
Georgian Shaker, painted  
in Dove Grey & Dust Grey.

*Worksurface*  
Caesarstone Rugged  
Concrete worksurface.





# Quarter Round Linear Shaker

---

*Our Quarter Round beading brings  
a subtle and endearing softness  
to the classic Shaker profile.*



# Quarter Round Linear Shaker

This simple and functional style shows the subtle variations of our 1909 collection. 'Quarter of a round' beading brings an endearing softness to the classic Shaker profile, complementing the delicate Dove Grey painted finish in this kitchen perfectly. Combining a mix of Chrome cup and knob handles, classic butt hinges and a Belfast sink, the kitchen embraces the warming farmhouse look, creating a homely environment which suits the character of the room perfectly.







# Slab

---

*Slab combines a contemporary,  
linear design with a sophisticated  
in-frame look, for a sleek and  
clean aesthetic.*





## Slab

The seamless form of our sleek, modern slab door sits beautifully within this bright and airy open-plan, kitchen-living space, creating a serene setting for cooking and relaxing. With a layout that's designed to work hard, the kitchen flaunts a multi-functional central island with breakfast bar seating, an embedded appliance bank that conceals a clever pull-out larder, and an abundance of workspace, perfect for any keen cook. A gentle colour palette of Cadet Blue and Dove Grey aligns with the clean simplicity of Slab to enhance the calming atmosphere, with striking metro tiling and a pale, Neolith Calcatta Silk worksurface offering echoes of a vintage interior.









*Range and colour*  
Slab painted in Cadet  
& Dove Grey.

*Worksurface*  
Neolith Calacatta Silk and Neolith  
Zaha Stone worksurfaces.





Featuring a bespoke bookshelf for displaying cookbooks and magazines, and an integrated towel rail concealed beneath the breakfast bar, this central kitchen island is truly tailored to maximise space and provide optimum functionality.

Kesseböhmer Konfigure inserts beautifully compliment modern drawers, and are endlessly customisable for storing cutlery, utensils and spices.







Kesseböhmer Dispensa Larder  
shown in Anthracite Arena Style





*Range and colour*  
Slab painted in Cadet  
& Dove Grey.

*Worksurface*  
Neolith Calacatta Silk and Neolith  
Zaha Stone worksurfaces.



Kesseböhmer  
YouK shelving

*The simplistic beauty of our  
in-frame slab door allows it to sit  
perfectly in any style of home*







The contemporary Slab takes on a whole new striking look in this L-shaped, compact kitchen design, shown in our beautifully deep and dramatic Copse Green. With Knurled Matt-Black handles, a matt-black tap, and a Kesseböhmer YouK exposed modular shelving unit, the linear design embraces an industrial aesthetic.





*Range and colour*  
Slab painted in Copse Green.

*Workspace*  
Dekton Lunar worksurface.









An open peninsula end with a free-standing look contributes to the unstructured, industrial style of this kitchen. A multi-functional feature, the peninsula can act as an attractive divide to section off an open-plan layout, whilst also providing open-slat shelving for easily accessible storage, and a drawer to keep kitchen essentials close to hand.



# Slab Outline

---

*Slab Outline features a unique, bespoke integrated handle that elevates the sleek and clean aesthetic of your slab kitchen.*



*Range*  
Slab Outline; Portal





## Slab Outline

The Outline Collection introduces a refined, bespoke integrated handle that seamlessly blends into the sleek lines of your slab kitchen, enhancing its modern appeal. This distinctive feature not only brings a touch of sophistication but also emphasises functionality with its ergonomic design, making it both stylish and practical. The handle's subtle integration preserves the clean, uninterrupted surfaces of the cabinetry, creating a streamlined, minimalist look that aligns perfectly with contemporary tastes. With Slab Outline, every detail is thoughtfully crafted to elevate your kitchen, adding an understated elegance that transforms the space into a modern, inviting focal point in the home.







*Range and colour*  
Slab Outline painted  
in Truffle & Putty.

*Worksurface*  
Dekton Laurent worksurface.







SLAB OUTLINE

## Portal

The timeless, circular design of Portal presents an elegant, soft handle option that pairs beautifully with the modern, linear design of our Slab door. Its distinctive round backplate evokes a touch of eclectic and retro sophistication.





*Range and colour*  
Slab Outline painted  
in Ives Blue.

*Worksurface*  
Sensa Ice Blue worksurface.





*Range and colour*  
Slab Outline painted  
in Ives Blue.

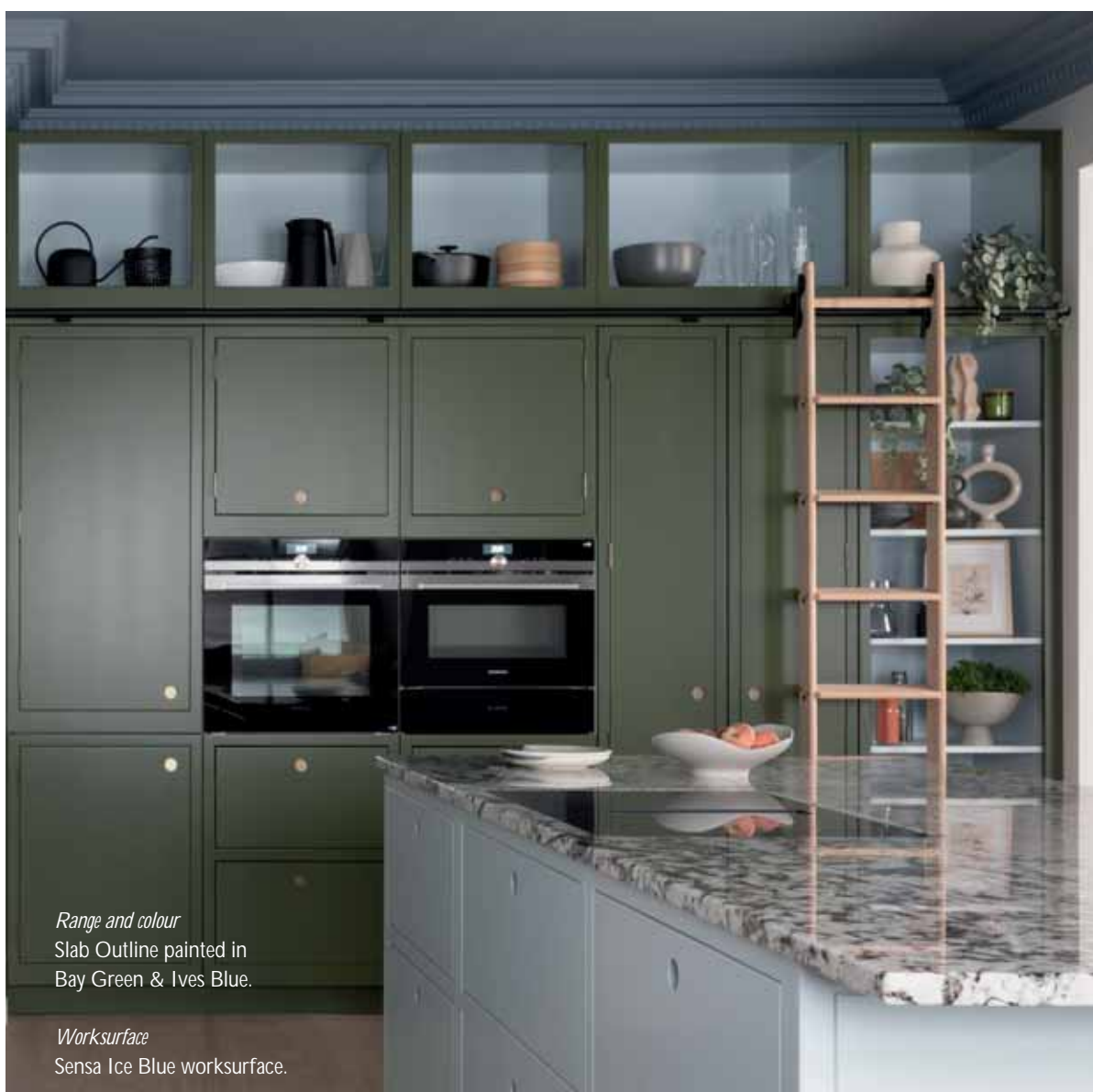




SLAB OUTLINE

## Portal

Designed to make a subtle statement, Portal enhances the visual flow of the kitchen, drawing the eye with its unique design. Crafted with precision, this handle seamlessly balances form and function, adding character while ensuring a comfortable, practical experience.









*Range and colour*  
Slab Outline painted  
in Taupe Grey.

*Worksurface*  
Dekton Awake worksurface.







## SLAB OUTLINE

# Extended Channel

Extended channel's bold, geometric shape creates a beautifully sleek, ultra-modern appearance for a functional yet adventurous handle, perfectly suited with the sophisticated in-frame design of our Slab door.





*Range and colour*  
Slab Outline painted  
in Taupe Grey.

*Worksurface*  
Dekton Awake worksurface.





# Feature Units

---

*At 1909, we understand it's the details that make your home special- whether it's a statement pantry unit, a multi-functional utility, or an adjoining boot room. It's the tailored features that create a truly individual space.*



# The Bi-fold Pantry

A true 'wow factor' feature, this large bi-fold pantry mirrors the timeless design of a traditional freestanding dresser. Creating the perfect home for your morning essentials, an integrated coffee machine, or an ever-growing collection of cookery books, the pantry subtly conceals your kitchen essentials neatly away behind beautiful bi-folding doors. Open or closed, your pantry will command the attention of the room.



Kesseböhmer Base Pullout  
shown in Chrome Arena Style



*Range and colour*  
Ovolo painted in Silver Grey.

*Worksurface*  
Strata Quartz Absolute  
Marbled White, Strata Granite  
Azul Aran worksurfaces.









# The Pantry

Equal in beauty and practicality, the humble pantry is a cupboard with a difference, a timeless feature with an abundance of possibilities. Shown here integrated into a run of beautiful Georgian units, this butler-style pantry opens to reveal stunning Washed Oak internals, including pantry door racks, spacious shelving and dovetail drawers, all illuminated by warming LED lighting for the perfect finishing touch.





*Range and colour*  
Georgian Shaker, painted  
in Dust Grey.

*Worksurface*  
Caesarstone Rugged  
Concrete worksurface.







# The Walk-in Pantry

Traditionally a room between the kitchen and dining area to store food, a walk-in pantry can transform an alcove or corner of your kitchen into the ultimate storage space. Shown here in our Georgian design, the walk-in pantry creates a classic statement, featuring elegant cabinetry that flows through from the main working kitchen area, and beautiful open shelving that truly maximises storage potential from floor-to-ceiling.











*Range and colour*  
Georgian Shaker, painted  
in Dove Grey & Dust Grey.

*Worksurface*  
Caesarstone Rugged  
Concrete worksurface.





# The Drinks Cabinet

---

*As the saying goes, it's what's on the inside that counts, but in the case of our Drinks Cabinet, we'd have to argue that what's on the outside is pretty special too.*

The 1909 Drinks Cabinet is our exquisitely crafted, free-standing feature cabinet- a statement piece of furniture that will bring an element of luxury to any night in. Featuring a three panel door as part of our in-frame Shaker and Ovolo styles, and shown here with beautiful Georgian beading, the cabinet design gives a nod to heritage style and demands the attention of the room with its traditional sophistication.

Behind the doors of the Drinks Cabinet is a treasure trove of tailored storage. With Cross Bottle Holders, open-shelving, dovetail drawers, an integrated chopping board and serving tray, and pantry door racks for displaying your favourite mixers, the cabinet offers you a special place for each and every one of your home bar essentials.





*Range and colour*  
Georgian Ovolo painted  
in Dry Rose.

*Worksurface*  
Silestone Lusso.



# The Boot Room

Conventionally a room to transition from outdoors to indoors, a boot room is the perfect way to continue your 1909 design through to another area of the home, creating a space that's an equal balance of beauty and practicality, with a nod to classical style. Featuring a bench with integrated shoe shelving, open and closed storage for outdoor essentials, coat and umbrella hooks, and a clever laundry cabinet, this multi-functional boot room is designed to work hard and keep up with the hustle and bustle of family life.



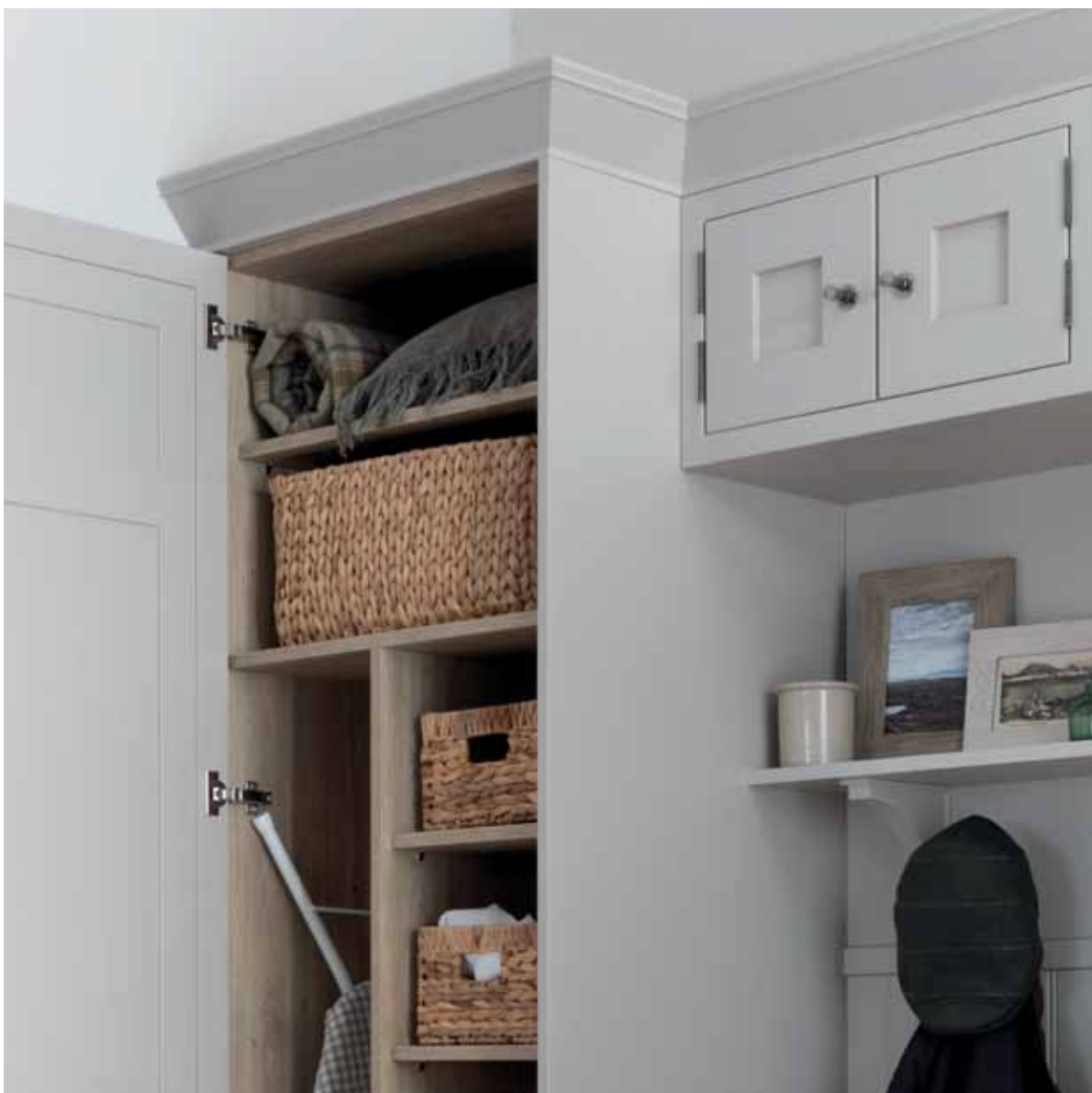




*Range and colour*  
Shaker painted in Cashmere.



A boot room is the perfect place to feature a laundry cabinet, to store away household items such as your ironing board and iron, that don't necessarily have a dedicated space in your home. The tall-door design of the laundry cabinet allows the unit to maximise space in even the smallest of rooms, with a selection of different sized shelves for an abundance of storage possibilities.





# The Utility Room

Often thought of as an extension of your kitchen, we believe this multi-functional space deserves the same careful consideration and style as your main kitchen design. If your home has the space, a tailored 1909 utility is the perfect cove for hiding away bulky appliances, like a washing machine and tumble dryer, and other household items you don't want to clutter up your main kitchen area. And, with an integrated sink, a utility room is great for containing messy jobs, such as cleaning muddy boots, and keeping them separate from your food preparation and dining areas.







*Range and colour*  
Quarter Round Shaker  
painted in Hartforth Blue.

*Worksurface*  
Strata Quartz Mayville  
Concrete worksurface.



A multi-compartment, pull-out laundry basket and accompanying clothes rail are ideal for storing and organising your family's washing. And, by situating these next to your washing machine and tumble dryer, you have a ready-made, designated laundry area- helping to make the mundane, everyday task easier for the whole family.







## Dresser Units

Taking inspiration from the classic Welsh dresser that once adorned only the family's 'best china', our beautifully crafted stand-alone dresser unit with open shelving holds all the traditional charm of its predecessor, with the functionality and versatility to make it the perfect addition to any kitchen, dining room, living space, or even garden room, as demonstrated here.

Painted in our rich Copse Green, this elegant dresser blends timeless charm with practical functionality. Featuring generous storage and striking fluted glass panels, it offers the perfect way to showcase your favourite kitchenware, decorative pieces, or cherished collections. The warm wood interior beautifully offsets the deep green finish, adding a touch of sophistication and personality to any room.

### *Range and colour*

Ovolo painted in Copse Green.

### *Worksurface*

Strata Arabieto Noir worksurface.







*Range and colour*  
Ovolo painted in Carbon.

*Worksurface*  
Strata Quartz Callacatta  
Silver worksurface.



*Range and colour*  
Shaker painted  
in Regents Green.

*Worksurface*  
Strata Quartz Pietra Verde  
worksurface.





## Sideboards

Our sideboard units are perfectly suited to make a beautiful statement in an entrance hall, living area or dining room, taking on a refined, modern-classic aesthetic. Available in our 35 unique painted colours, and with any of our 1909 worksurfaces, the sideboard can be truly tailored to reflect your individual style and the character of your home.

Shown here in our regal Regents Green and paired with a striking Strata Quartz Pietra Verde worksurface with green accents, this sideboard displays how square feature posts can be used to give the piece a homely, free-standing look.

*Range and colour*  
Shaker painted  
in Regents Green.

*Worksurface*  
Strata Quartz Pietra Verde  
worksurface.











*Range and colour*  
Slab Outline painted  
in Ives Blue.

*(Right) Range and colour  
Slab Outline painted  
in Putty.*









# 1909 Door Styles

Whilst each 1909 door style is different, presenting a wealth of design possibilities, there are intrinsic parallels which run throughout: quality, meticulous attention to detail and a timeless, quintessentially British feel.

Our Classic Shaker and intricate Ovolo door styles can be complemented by the addition of beaded detailing. Sitting neatly into the frame of the door, our beading comes in four options. Choose from the decorative Half Pencil & Scalloped style, elegant Georgian, or the simple Quarter Round (two or four sided), to give your kitchen a tailored, individual look.

Alternatively, our Slab door style offers a simple and clean choice for those looking for a more modern aesthetic. For added versatility, our new Slab Outline range features three integrated handle options, complemented by a curated selection of backplates to suit your preferences.

Much of 1909's beauty comes from its crisp, smooth painted finish. Due to the traditional flush joint construction techniques of our furniture and the natural properties of real living timber, small signs of movement may appear as the kitchen ages and settles into its new home. This is common with many other types of furniture and any 'whisper lines' that do appear can simply be overpainted.

Please ask your 1909 specialist retailer if you have any queries on maintaining your kitchen over time and they will be happy to help.



SHAKER



OVOLO

*Shaker and Ovolo Additional Beading Options -*



Half Pencil & Scalloped



Quarter Round Linear  
2 sided



Georgian



Quarter Round  
4 sided



SLAB



SLAB  
OUTLINE

*Outline integrated handle options -*



Portal



Channel



Extended Channel





# Slab Outline

Slab Outline brings a sophisticated touch to modern kitchen design with its bespoke integrated handle, perfectly complementing the smooth, seamless lines of our slab range. This unique feature enhances both style and practicality, offering a design that balances modern aesthetics with everyday functionality.

The discreetly integrated handle accentuates the door's clean, unbroken surfaces, delivering a refined, minimalist appearance that resonates with contemporary design. Every element of Slab Outline is meticulously designed to elevate your kitchen, infusing it with a subtle elegance that transforms it into a stylish and welcoming centre piece of your home.

## OUTLINE HANDLE OPTIONS



Portal



Channel



Extended Channel

## BACKPLATE OPTIONS

*Timber backplates - 4mm*



Oak



Walnut

*Painted backplates - 4mm*



Colour Matched  
To Frontal



Carbon  
Smooth Finish

*Metallic backplates - 2mm*



Antique Bronze  
Effect



Aged Brass



Bright Copper



Brushed Brass



Stainless Steel

## Paint Palette

The 1909 collection can be painted in a choice of 35 exquisite colours, each carefully created by industry-leading designers and equally suited to traditional or contemporary homes.

From muted neutrals and profound monochromes, to vibrant colours creating a statement to match any mood; there's no need to limit yourself to just one!

Use our paint palette to help turn your kitchen dreams into reality.

Alternatively, our 1909 specialist retailers will be more than happy to suggest inspirational ideas to find your perfect colour.

Please note: Whilst every effort has been made to accurately represent painted colours, actual product colours may vary slightly from colours shown in this brochure. If opting for a dark kitchen, it is worth noting that darker shades can show up fingerprint marks more easily than lighter finishes, however these are easily removed with a soft Microfibre anti-scratch cloth, available from most supermarkets.



# Neutrals

Neutrals are perfect for brightening or bring a calming warmth to a space, and work equally well as stand-alone colours or paired with a complementing shade for a two-tone look.

## *Neutrals*



White



Chalk



Porcelain



Mussel



Taupe Grey



Stone





Chalk



*Slate, Silver Grey and Dove Grey*

# Greys

Ranging from the soft, muted tone of Dove Grey, through to the moody depth of Carbon, our beautiful Grey palette is filled with an array of versatile shades to suit any kitchen style.

## *Greys*



Dove Grey



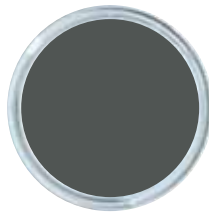
Silver Grey



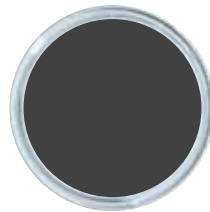
Putty



Dust Grey



Slate



Graphite



Carbon

# Warm Neutrals

From regal reds and deep, earthy tones, to muted hues with soft undertones, our warm neutrals can bring reassuring comfort and refined character to a design.

## *Warm Neutrals*



Cashmere



Dry Rose



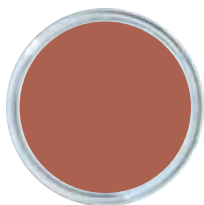
Meadowell



Fawn



Truffle



Pimento



Malbec





Truffle



*Copse Green*

# Greens

With an array of warming Olive Greens and a selection of rich, grounded Forest Greens, our Paint Palette has the perfect shade to suit any taste and kitchen aesthetic.

## *Olive Greens*



Sage



Olive

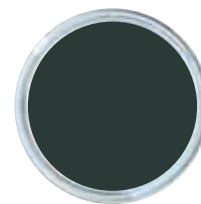
## *Forest Greens*



Regiment



Regents Green



Copse Green

# Blues

Our Blue collection is split into two distinctive tonal palettes, the Ink Blues, which could be described as our true blue shades, and the Green Blues, each with a subtle green undertone. Each unique shade would work perfectly in a stand-alone look, or paired to create a complementary two, or even three, tone aesthetic.

## *Ink Blues*



Ives Blue



Cadet

## *Green Blues*



Partridge Grey



China Blue



Sea Glass



Chalk Blue



Storm Blue



Majestic Teal



Hartforth Blue



Charcoal